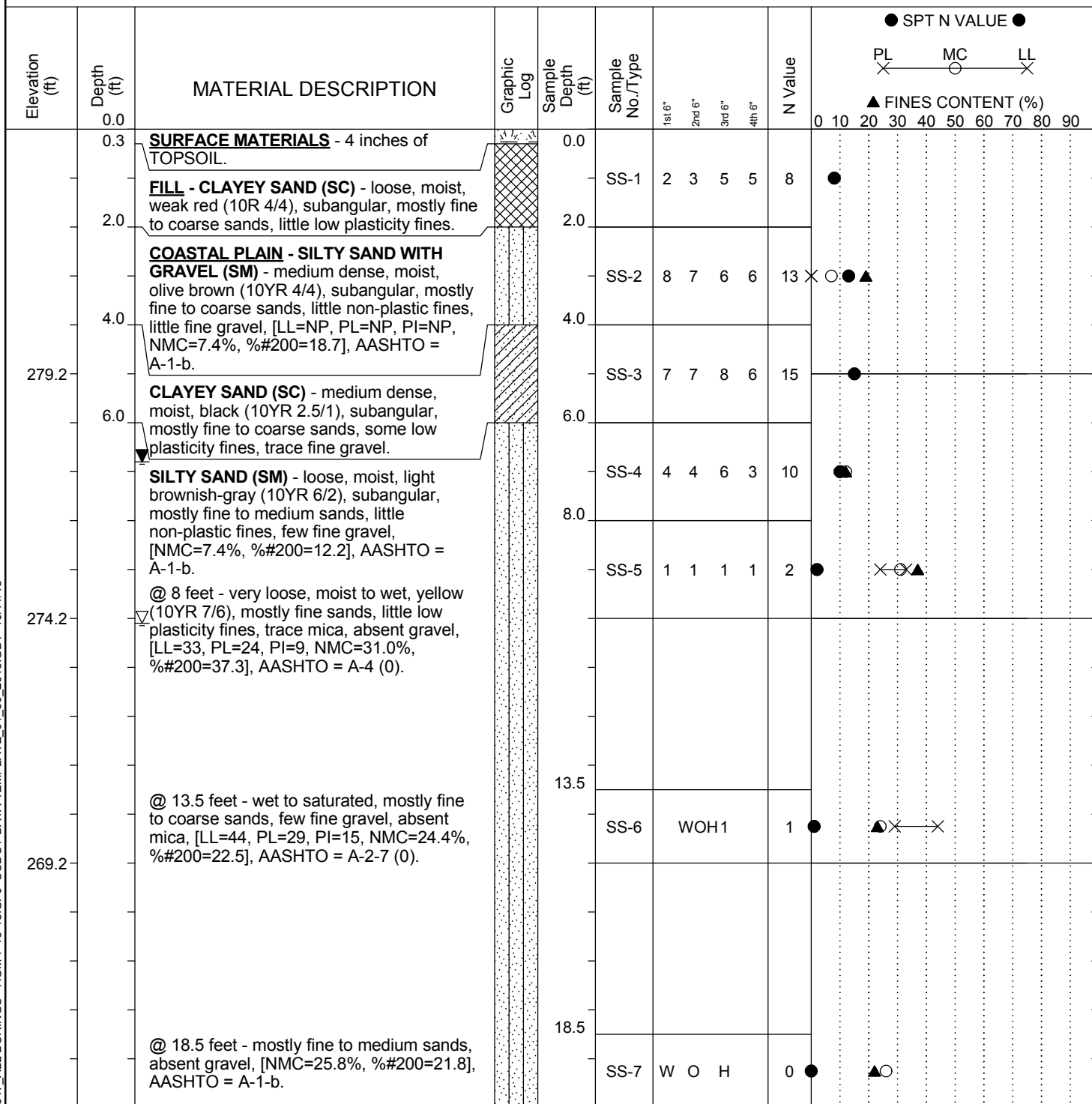


SCDOT Soil Test Log

Project ID:		P027662			County:		Lexington/Richland		Boring No.:		W-29						
Site Description:			Carolina Crossroads I-20/26/126 Corridor Improvement Project								Route:		I-20				
Eng./Geo.:		AKS		Boring Location:			205+83.54		Offset:		R:192.263		Alignment:		Proposed		
Elev.:	284.2 ft		Latitude:		34.038238		Longitude:		-81.095809		Date Started:		3/23/2018				
Total Depth:		59.9 ft		Soil Depth:		49.3 ft		Core Depth:		10.6 ft		Date Completed:		3/26/2018			
Bore Hole Diameter (in):				3.5		Sampler Configuration			Liner Required:		Y (N)		Liner Used:		Y (N)		
Drill Machine:		D-50		Drill Method:		RW		Hammer Type:		Automatic		Energy Ratio:		86.5%			
Core Size:		NQ		Driller:		J. Millwood		Groundwater:		TOB		10.1 ft		24HR		6.8 ft	



LEGEND

Continued Next Page

SAMPLER TYPE		DRILLING METHOD	
SS - Split Spoon	NQ - Rock Core, 1-7/8"	HSA - Hollow Stem Auger	RW - Rotary Wash
UD - Undisturbed Sample	CU - Cuttings	CFA - Continuous Flight Augers	RC - Rock Core
AWG - Rock Core, 1-1/8"	CT - Continuous Tube	DC - Driving Casing	